

# Dashcam User Manual

## FW83K

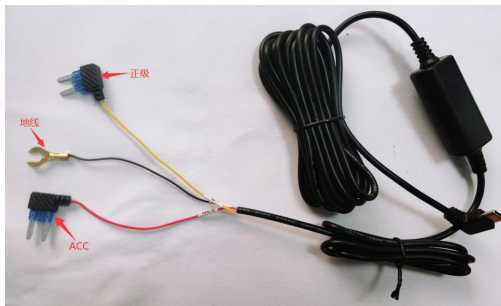


## Main functions as follows,

- 2.0 inch full viewing angle screen, IPS HD screen
- The maximum resolution of the front shot supports 3840\*2160P
- The rear camera and cabin camera resolution supports 1920\*1080P & 1920\*1080P video recording
- Support WIFI mobile phone interconnection function
- Built-in G-SENSOR collision video locking function
- Support time-lapse video parking monitoring function
- Support External GPS functions
- Up to 256G-TF card is supported

## Installation instruction

- 1 Turn off the car engine
- 2 Insert the TF card into the recorder slot correctly.[note] please use a high-speed TF card (Class10 or above) with a capacity of at least 8GB and a maximum support of 256GB.
- 3 Fix the recorder on the front windscreen, and connect the wire with the recorder first.
- 4 After wiring the dashcam via a 12V-to-5V buck line—connecting yellow to constant 12V, red to ignition-switched (ACC) power, and black to ground—start the engine. If the red light turns on and blinks, the device is functioning normally and has begun recording, confirming the wiring is correct.



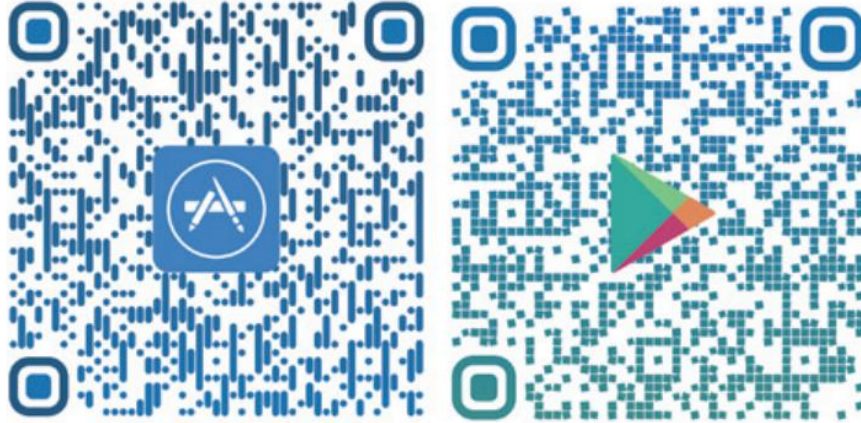
Picture 1 Wiring diagram



Picture 2 Charger diagram

## APP download

1. For the first time, please use your mobile phone to scan the following QR code to download the APP.



**Viidure app QR**

2, Note: IOS mobile phone search "Viidure " on IOS store or can search "Viidure" on Google.

3, After starting the car and turning on the recorder, find the WIFI starting with "Dashcam\_WIFI\_\*\*\*\*\*" in the Settings of the mobile phone, and enter the default password **12345678** to connect.

4. After the connection is completed, enter the APP, and the time of the recorder will synchronize with the time of the current phone. In addition, the TF card needs to be formatted on the APP.

## Recorder Instruction

1. The key functions description

Key Function	Device shortcut function	M KEY	Short press	Menu Function/ Return record
		Power KEY	Short press	OFF/ON screen
			Long press 2 seconds	OFF/ON the machine
		Left KEY	Short press	Off/on audio
		Right KEY	Short press	Turn to rear/front/cabin split screen
		OK KEY	Short press	Pause recording/Start recording
	Long press 2 seconds		Take photo	
	LCD MENU FUNCITONS	M KEY	Short press	Return
			Long	Exit file management

			press 3 seconds	
		Left KEY	Short press	Move left/up
		Right Key	Short Press	Move right/Move down
		Power KEY	Short Press	Whether to delete a file / Whether to lock the file
		OK key	Short press	Confirm
The machine will automatically turn off WIFI after 5 minutes if there is no WiFi connection When the WIFI is off, you can turn on WIFI by press <b>ANY</b> key.				

➤ **【M KEY】 MENU KEY/RETURN KEY**

Function 1: In the state of video mode; Press [M KEY] to enter the menu mode.  
Function 2: In the menu, short press [M KEY] to return, in the file management state, long press [M KEY] for 3 seconds, you can exit the file management.

**Left KEY/Play previous video**

Function 1: Page up function  
In menu Settings and Playback mode, short press [ Left key] to move left or up.  
Function 2: Play the previous video  
In playback mode, when playing a video, you can short press [Left Key] to play the previous video.

**Power button/Screensaver button**

Function 1: On/off function  
In the shutdown state, long press [power button] for 2 seconds to turn on the power supply of the machine, and the machine will automatically start to work. Long press [Power button] and hold for 2 seconds. The machine will automatically save the video file and user Settings and shut down.  
Function 2: Screen saver  
In the startup state, press [Power button] to turn off the screen, and short press again to turn on the screen.

➤ **Right Key/ Window switch/ Play the next video**

Function 1: Page down function  
In menu Settings and Playback mode, short press [Right Key] to move to the right or down  
Function 2: Display window switch  
When HD rear shooting is selected, short press [Right Key] on the video mode interface to switch the display window, and then short press [Right Key] to display the front/back split screen state  
Function 3: In playback mode, when playing a video, short press [Right KEY] to play the next video

➤ **【OK KEY】 OK KEY/ Record Key/ Take photo Key**

Function 1: OK key  
In standby video mode/photo mode/playback mode; Enter the menu mode, press [up/down] to browse, and short press [OK key] to confirm.  
Function 2: Enable/disable the recording function

In recording mode, press [OK key] to start recording and press [OK key] again to stop recording.

Function 3: In the state of recording, long press [OK button] for 2 seconds to take a picture

## 2. Indicator description

Blue light	Blinking slowly	Recording
	Always on	unrecorded
Red light	Quick flashing	The TF memory card is not inserted or the memory card is abnormal
	Always on	TF card has been inserted
Note: The red and blue lights flash rapidly at the same time: the recorder device is being upgraded		

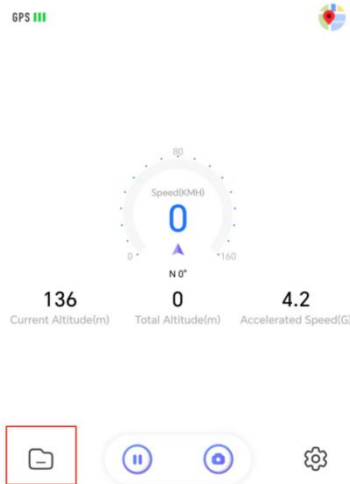
## Operation Instructions



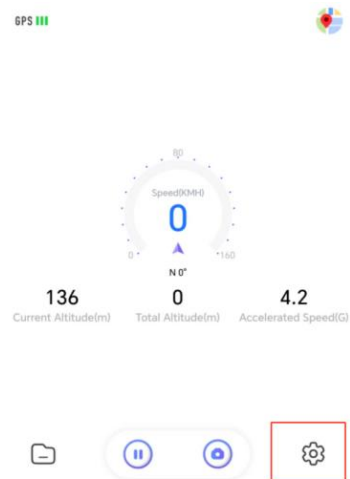
**Microphone button:** Turn Microphone on or off. If you turn off this button, the recording will not record any sound.



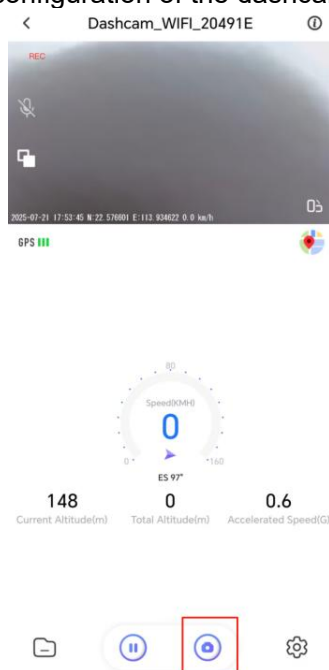
**Full screen button:** Once you press the button, the monitor screen will turn to full screen.



**Document button:** Check the regular recording, emergency recording, snapshot and parking monitor recording.



**Setting button** to change the configuration of the dashcam.



**Camera button:** take a snapshot.

## Dashcam Setting Page

Sound Recording	<input checked="" type="checkbox"/>
Speaker Volume	High >
Video Resolution	2.5K >
Loop Recording Duration <small>The duration of each recording, if the memory card is full, it will automatically be overwritten from the earliest video</small>	1 Minute >
Mirror	<input checked="" type="checkbox"/>
Flip	<input checked="" type="checkbox"/>

### Video section

**Sound Recording:** To turn the microphone on or off.

**Speaker Volume:** Speaker Volume from high to low.

**Video Resolution:** Parameter of Video resolution

**Loop Recording Duration:** Each loop recording clip has three specifications: 1min, 3min, 5min.

**Mirror:** To mirror the monitor screen.

**Flip:** To make the screen up side down.

Advanced	
Collision Sensing <small>When the camera is in recording mode, it will automatically lock current video when a impact is detected</small>	Low >
Low Voltage Regulation <small>When the vehicle battery is lower than this option, the camera will automatically shut down</small>	12.0V >

### Advanced section

**Collision Sensing:** The level of sensitivity from low to high.

**Low Voltage Regulation:** Voltage options has 11.8V, 12.0V and 12.2V

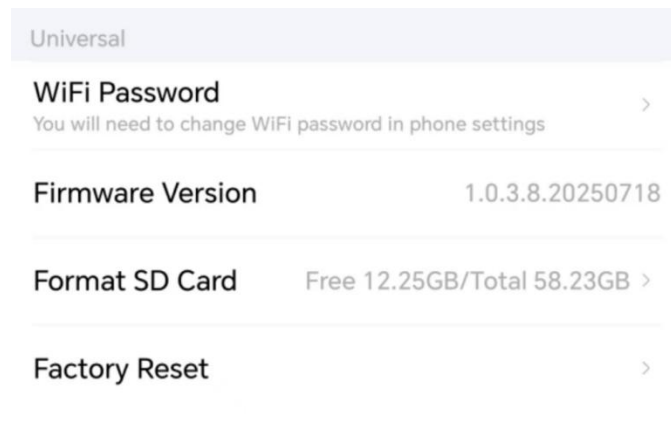
Parking Mode (Hardwire Kit Required)	
Collision Detection Sensitivity for Parking <small>Adjust the collision sensitivity after the car is turned off</small>	Off >
Time-lapse Recording Duration	Off >

### Parking Mode (Buck line required)

**Collision Detection Sensitivity for Parking** This function work with G-sensor, to detect any collision or car shake when parking. It has four options: off, low, medium and High

**Time-lapse Recording Duration:** This function is to take short video when your car parked. It saves storage of the memory card, but capture key moments. It has four

options: off, 15 min, 12 hour and 24 hour.



## Universal section

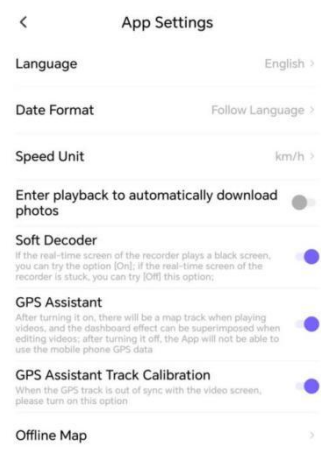
**WiFi Password:** Where you can change the password.

**Firmware Version:** To understand what version that used, help technicians to locate bugs and add new features

**Format SD Card:** Erase old data of the memory card, that old data will lose.

**Factory Reset:** Erase all custom data settings and return to the default.

## APP Setting Page



**Language:** Support multiple languages for user to change.

**Date Format:** Support multiple format for user to change.

**Speed Unit:** Support multiple units for user to change.

**Enter playback to automatically download photos:** This will save emergency photos and took photos

**Soft Decoder:** This will help display the phone screen when it black.

**GPS Assistant:**

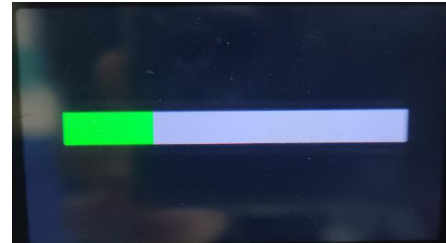
**GPS Assistant Track Calibration:** GPS out of sync with real time screen, will need to turn on this option.

**Offline Map:** Download the map in advance to help user better locate on the Map.

## Screen interface



**Screen Display**



**The upgrade page is displayed**

## Recorder parameter

Maximum video resolution	4K (3840*2160)
Aperture	F1.8
Diagonal	135° wide angle
Encoding capability	3840*2160P +1920*1080P +1920*1080P
Video encoding format	H.264
Photo format	JPEG
Collision sensor	3 axis acceleration sensor
Recording mode	Loop recording without missing seconds
Storage	TF card (Class 10 or above, maximum support 256GB)
Operating voltage	5V
Storage temperature (°C)	(-20°C-75°C)
Operating temperature (°C)	(-30°C-85°C)
Parking monitoring (time-lapse video)	Support
GPS function	External GPS
Certification	CE,FCC,RoHS

### FCC Warning Statement

Changes or modifications not expressly approved by the party responsible for compliance could void the user's authority to operate the equipment. This equipment has been tested and found to comply with the limits for a Class B digital device, pursuant to Part 15 of the FCC Rules. These limits are designed to provide reasonable protection against harmful interference in a residential installation. This equipment generates uses and can radiate radio frequency energy and, if not

installed and used in accordance with the instructions, may cause harmful interference to radio communications. However, there is no guarantee that interference will not occur in a particular installation. If this equipment does cause harmful interference to radio or television reception, which can be determined by turning the equipment off and on, the user is encouraged to try to correct the interference by one or more of the following measures:

- Reorient or relocate the receiving antenna.
- Increase the separation between the equipment and receiver.
- Connect the equipment into an outlet on a circuit different from that to which the receiver is connected.
- Consult the dealer or an experienced radio/TV technician for help.

This device complies with part 15 of the FCC Rules. Operation is subject to the following two conditions: (1) This device may not cause harmful interference, and (2) this device must accept any interference received, including interference that may cause undesired operation.

#### RF Exposure Statement

To maintain compliance with FCC's RF Exposure guidelines, This equipment should be installed and operated with minimum distance of 20cm the radiator your body. This device and its antenna(s) must not be co-located or operation in conjunction with any other antenna or transmitter.

**The instructions are subject to change with further notice.**

**Disclaimer: The video recording can be used as an auxiliary basis for judging traffic accidents, but it is not the only basis. For the loss of traffic accidents, the company does not assume any responsibility, please obey the traffic rules.**